

Technical data sheet



Benefits:

- Faster application: 1.25m high, with 1.20m of yield after overlaps
- More energy efficient buildings and homes
- High insulating power in conduction, radiation and convection
- Adds sound insulation to impact noises
- Radon gas barrier
- Quick and easy to install
- Waterproof
- Does not promote the breeding of insects or rodents
- The product acts as an air chamber

Thermal Equivalence

Glass Wool	70mm
Rock Wool Type IV	63mm
Expanded Polystyrene (EPS)	60mm
Extruded Polystyrene (XPS)	60mm
Expanded Cork	66mm

Thermal insulation

Refª.	Length x Width (± 2%)	Area (± 2%)	Ø (± 5%)
ULTRA BIG	32m x 1,25m	40m ²	± 52cm
ULTRA BIG R10	8m x 1,25m	10m ²	± 25cm

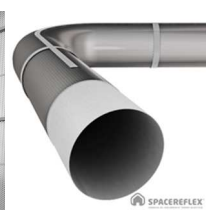
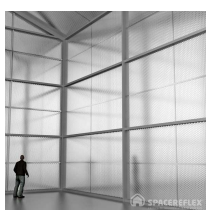
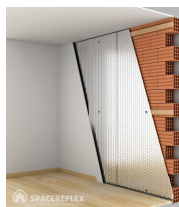
Technical Data

Thickness	8mm
Thermal Conductivity	0,050 (W/m.K)
Reflection Coefficient	95 to 97%
Emissivity	3 to 5%
Resistance to Compression (50% Deformation)	1,90 ± 0,52 (N/mm2)
Tear Resistance (Aluminium Side)	162,10 ± 30,38 (N/mm)
Fire Rating (Aluminium Side)	M1
Fire Rating (Composite Product)	Euroclasse E
Thermal Resistance (R)	1,66 (M ² k/w)
Water Vapour Permeability	6 ≤ 0,019x10 ⁻³ (mg / h.m.Pa)
Usage Temperature	-25° to 80° (°C)
Hazardous Substances	Does not contain
Radon Gas Barrier	Yes

Composition

Two-sided reflective insulation with reinforced and protected aluminium and a large air bubble layer inside.

Application Areas



- Walls
- Ceilings
- Air conditioning / Ventilation (HVAC, Ducts)
- Industrial warehouses, greenhouses, barns, cowsheds, aviaries, pigsties, stables, etc...
- Camping vehicles and caravans
- Containers and trucks
- Isothermal blinds and packaging
- Reinforcement of existing insulation
- Additional waterproofing
- Radon gas barrier
- And much more...